



USYS
NATIONAL
PRESIDENTS
20 CUP 24
WICHITA, KS



TEAM INFORMATION GUIDE



Table Of Contents

Team Information 700	Rules & Information Regarding the Competition.....	4
Team Information 701	Competition Facts	4
Team Information 702	Important Dates & Deadlines.....	4
Team Information 703	Hotels.....	5
Team Information 704	Travel.....	5
Team Information 705	National Presidents Cup Website.....	5
Team Information 706	Adapting to the Weather.....	5
Team Information 707	Schedule for the Week.....	6
Team Information 708	Player & Team Official Member Passes.....	6
Team Information 709	Roster Submission Date.....	6
Team Information 710	Roster Freeze Date.....	7
Team Information 711	Coach / Manager Webinar	7
Team Information 712	Other Check-In Information.....	7
Team Information 713	Bench Credentials	7
Team Information 714	Medical Release Forms.....	8
Team Information 715	Player Event	8
Team Information 716	Uniforms.....	10
Team Information 717	Uniform Logos, Markings & Sponsors.....	10
Team Information 718	Uniform Patches.....	11
Team Information 719	General Expectations.....	11
Team Information 720	Team & Player Behavior.....	12
Team Information 721	Spectator Conduct	13
Team Information 722	Referees.....	14
Team Information 723	Practice.....	14
Team Information 724	Teams Traveling by Bus.....	14
Team Information 725	Inclement Weather.....	15
Team Information 726	Playing Venue.....	16
Team Information 727	Local Attractions.....	16
Team Information 728	Hospital & Urgent Care Facilities.....	16
Team Information 729	Match Day Procedures.....	17
Team Information 730	Individual Awards to Players.....	18
Team Information 731	Champion & Finalist Award Ceremony.....	18
Team Information 732	Schedule of Events.....	19
Team Information 733	Match Schedules.....	20
Team Information 734	Field Map	21
Team Information 735	Sports Medicine Information.....	22
Team Information 736	Frequently Asked Questions.....	23





National Presidents Cup Qualifiers:

Congratulations! You have won the right to compete in the US Youth Soccer National Presidents Cup, which brings together teams from across the United States competing against one another for the National Presidents Cup Championship. You may meet fellow participants from as far away as Alaska or Hawaii, perhaps Maine or Florida, from the deep South of Texas, Southern California, or Illinois. When you started playing this season, this adventure was probably just a distant dream. That dream is now real, you will represent your State and Region for an honor that is difficult to achieve. The US Youth Soccer Presidents Cup Management Group wishes you the best during the competition.

As you prepare for this journey, this Team Information Guide has been created to provide important information and guidance. I suggest that this document be shared with all team members for reference. As you read through this document, please pay special attention to any items that are in a box. That information is especially critical.

The US Youth Soccer National Presidents Cup provides a progressive, competitive experience to US Youth Soccer teams that advance from the state to regional and eventually to the national level. The competition gives players an opportunity to compete against teams from across the country at a high level of play and provides the chance to experience a unique US Youth Soccer Championship with a special focus on camaraderie, community, and competition through sport.

I wish you the best of luck throughout the competition.

Cordially,

A handwritten signature in black ink that reads "Will Maffit".

Will Maffit
Program Manager
US Youth Soccer Presidents Cup



#CLAIMTHECUP





TEAM INFORMATION 700 RULES & INFORMATION REGARDING THE COMPETITION

Any information in this document does not replace the need to be familiar with the "US Youth Soccer Presidents Cup Competition Rules", the "Policy on the US Youth Soccer National Presidents Cup", and the "US Youth Soccer Presidents Cup Competition Protocols", all of which are available for download from the [US Youth Soccer National Presidents Cup](https://www.usyouthsoccer.org/USYS-National-Presidents-Cup) website.

TEAM INFORMATION 701 COMPETITION FACTS

Event.....2024 US Youth Soccer National Presidents Cup
Dates.....July 12 through 16, 2024
Admission.....Free
Parking Fee.....None
Participants.....104 teams in the 13U through 19U age groups
Format.....Group play is contested in each age group/gender on Friday July 12th, Saturday July 13th and Sunday July 14th. Semi-Final matches in the 13U through 18U age groups and Championship matches for the 19U age groups will be contested on Monday July 15th, and Championship matches in the 13U through 18U age groups will be contested on Tuesday, July 16th.

For any questions, please contact your Regional Presidents Cup Program Manager:

East Region	Beth Noss	304.290.8435	bnoss@usyouthsoccer.org
Midwest Region	Jen Fickett	469.215.1325	jfickett@usyouthsoccer.org
South Region	Jeannie Louk	629.239.1809	jlouk@usyouthsoccer.org
Far West Region	Tonya Pinkerton	314.941.3877	tpinkerton@usyouthsoccer.org
National	Will Maffit	501.463.6465	wmaffit@usyouthsoccer.org

TEAM INFORMATION 702 IMPORTANT DATES & DEADLINES

Please note the following important dates and times for ALL TEAMS. If you are not sure of anything related to the competition, please do not wait until the last minute to ask!

Item	Deadline (All times CDT, adjust for your time zone)
Provide team contact to Regional Program Manager	5:00PM Thursday, June 20, 2024
Reserve hotel rooms	8:00AM Tuesday, June 25, 2024
Team Roster submission deadline	11:59PM Monday July 1, 2024
Team Webinar (Strongly Recommend that at least ONE representative per team attend)!!!	Monday July 1, 2024 (5:30PM PDT, 6:30PM MDT, 7:30PM CDT, 8:30PM EDT)
Final Roster Freeze	11:59PM Thursday July 4, 2024
Submit uniform colors and Subsidy mailing information	11:59PM Thursday July 4, 2024





TEAM INFORMATION 703 HOTELS

US Youth Soccer has partnered with On Location (formerly Anthony Travel) to reserve rooms for the National Presidents Cup. Teams are required to stay in the hotel(s) assigned to them and there are no exceptions.

Teams are allotted up to 15 rooms to start, with additional rooms most likely available once the reservation deadline has passed.

Teams are required to utilize a minimum of eight (8) hotel rooms for a minimum of three (3) nights, or a total of 24 room-nights in total.

All Hotels will be providing breakfast.

To reserve your room block, the individual coordinating hotel rooms for your team must contact Owen Roche or Will Gibson (usyouth@onlocationexp.com or 855-665-3287).

As outlined previously, the deadline to book hotel rooms is 8:00AM Tuesday, June 25, 2024.

Information needed to reserve hotel rooms:

- Team Name, Age Group and Gender
- Region (East, Midwest, South or West)
- Team hotel coordinator name, email address and phone number

Once your block is assigned, the individual coordinating hotel rooms will receive additional instructions and a link for individual families to reserve their rooms.

If you need any additional information, have questions, or need to modify a reservation, please use the same contact information above. Please do not contact the hotel directly, as they may not receive your actual reservations until quite close to the arrival date.

TEAM INFORMATION 704 TRAVEL

All travel to the competition is at your expense. Should teams choose to fly, the closest airport is the Wichita Dwight D. Eisenhower National Airport (ICT). Barring unforeseen circumstances or weather delays, we anticipate the last award ceremony will be complete no later than 2:00PM on Tuesday, July 16th. It is strongly recommended that you plan your departure time accordingly to enable your team to participate fully in the US Youth Soccer National Presidents Cup awards ceremonies.

TEAM INFORMATION 705 NATIONAL PRESIDENTS CUP WEBSITE

Please visit the [US Youth Soccer National Presidents Cup](https://www.usyouthsoccer.com/national-presidents-cup) website in the leadup to the competition. Here you'll find the most up to date information, any last-minute changes, or notifications, along with a link to all match schedules, results, and standings.

TEAM INFORMATION 706 ADAPTING TO THE WEATHER

It is suggested that teams prepare for play in extreme conditions. The competition is held in early July and the weather in Wichita will likely be hot and humid. The average high temperatures during the competition are in the low to mid 90's; lows are in the high 60's. It is suggested that players begin to hydrate their bodies a minimum of one week prior to the event to help avoid heat-related illnesses.



#CLAIMTHECUP





TEAM INFORMATION 707 SCHEDULE FOR THE WEEK

Matches will be contested at the [Stryker Sports Complex](#), 2999 N. Greenwich Rd, Wichita, Kansas 67226

Thursday, July 11	Opening Ceremony / Player Event
Friday, July 12	Group Play Day 1
Saturday, July 13	Group Play Day 2
Sunday, July 14	Group Play Day 3
Monday, July 15	13U - 18U Semi-Finals (The top two teams from each group advance to the Semi-Finals)
Monday, July 15	Championship matches for the 19U age groups
Tuesday, July 16	Championship matches for the 13U - 18U age groups

TEAM INFORMATION 708 PLAYER & TEAM OFFICIAL MEMBER PASSES

Each player and team official listed on a team roster must possess a current seasonal year US Youth Soccer member pass with a recent face on, passport style photograph.

Member Passes must be laminated and contained on a split binder ring as pictured below, in alphabetical order by last name, all players first and then followed by team officials at the end. If your state uses credit card style, machine produced plastic Member Passes, they are exempt from the laminating requirement, but still need to be contained on a split binder ring.



To complete the online check in process, all team member passes must also be uploaded into the US Youth Soccer Event Management system no later than 11:59PM on Sunday, July 7, 2024.

TEAM INFORMATION 709 ROSTER SUBMISSION DATE

Each team must submit a roster into the US Youth Soccer Event Management system no later than Monday July 1, 2024 *at 11:59PM Central Daylight time*. Rosters cannot exceed twenty-two (22) players.

Rosters must include each player's primary playing position as well as the number of each player's jersey.

A maximum of 18 players are eligible to play in a match; players on the team roster not participating in a match may sit on the bench in street clothes. Once identified, the sitting players cannot be substituted into that match.



#CLAIMTHECUP





TEAM INFORMATION 710 ROSTER FREEZE DATE

The FINAL roster freeze date in the US Youth Soccer Event Management system is 11:59PM CDT on Thursday July 4, 2024.

Your State Association must verify the eligibility of the players on your roster, so it is imperative that you work with them and allow sufficient time to resolve any issues that arise *before* the July 4th roster freeze date.

Teams will receive information from US Youth Soccer on the procedures connected with the GotSport system and National Presidents Cup.

Teams and State Associations are responsible for ensuring that participating teams maintain a roster continuity of at least 9 players from the State Qualifying event as they enter the National Presidents Cup event.

By confirming the team's final roster into the GotSport system, the State Association is certifying compliance with all appropriate National Presidents Cup policies and rules, including, but not limited to, birth date verification.

TEAM INFORMATION 711 COACH / MANAGER WEBINAR

In lieu of an in-person team check-in, US Youth Soccer will host a webinar for State Reps, Team Managers and Coaches on Monday, July 1, 2024 at 5:30PM PDT/6:30PM MDT/7:30PM CDT/8:30PM EDT. The call-in link for this webinar is below, and will be sent out again to State Reps, Team Managers and Coaches a few days prior to the webinar. The webinar will be recorded and made available to all teams after the presentation for reference. The webinar will review the online team check-in procedures, important event information & procedures, and will also include an opportunity for questions and answers. It is strongly recommended at least one representative from each team attend.

[>> Link to join July 1 Team Webinar <<](#)

TEAM INFORMATION 712 OTHER CHECK-IN INFORMATION

- Identical to the Regional Presidents Cup competition, pdf files of Member Passes for each player and team official on the roster must be uploaded into the US Youth Soccer Event Management system no later than 11:59PM on Sunday, July 7, 2024. Additionally, the physical Member Passes for each player and team official on the roster must be presented to the Referee at each match during the competition.
- Each team completed a Code of Conduct form online before the Regional Presidents Cup competition. As a reminder, that document remains in effect for the National Presidents Cup competition.
- A goody bag for each team will be distributed immediately before the Opening Ceremony/Player Event at the Hartman Arena.

TEAM INFORMATION 713 BENCH CREDENTIALS

Teams are strongly encouraged to roster a minimum of two (2) credentialed team officials, as there may be situations when a credentialed team official is required to leave the technical area. Teams must have at least one (1) credentialed team official in the technical area at all times during a match.

Each team may be provided with up to four (4) Bench Credentials, one for each team official listed on the roster as entered in the US Youth Soccer Event Management system. These credentials must be worn around the neck, on the lanyard provided, and be visible at all times. Individuals not clearly displaying these passes will not be permitted in the Technical Area. Bench Credentials will be distributed with the team goody bag at the Player Event.



#CLAIMTHECUP





TEAM INFORMATION 714 MEDICAL RELEASE FORMS

It is recommended, but not required, that completed and signed US Youth Soccer Medical Release forms be available and accessible for all players during the event. The form is available on the US Youth Soccer website in both [English](#) and [Spanish](#).

TEAM INFORMATION 715 PLAYER EVENT

The player event will be held on Thursday July 11th, 2024, the afternoon before play begins. It is not mandatory to attend, but teams will be missing out on one of the highlights of the National Presidents Cup if they do not participate.

The Player Event and Opening Ceremony will be held at the [Hartman Arena](#), 8151 N. Hartman Arena Drive, Park City, Kansas 67147. Details on Regional seating assignments are below and will also be confirmed via email.

The player event provides an opportunity for the players to meet their fellow soccer players from all over the country, as well as the opportunity to trade pins, memorabilia, t-shirts, and other items that help define your state and culture. Most players participating in previous National Presidents Cup competitions and other US Youth Soccer hosted events have reported this is one of their best memories of the competition. Players will have access to a large open area where they can take photographs with the Championship Trophies, mingle, and meet their fellow competitors.

The trading may start off slow, but once everyone gets the hang of things, it becomes fast and furious. History has shown that somewhere around 10 to 20 trading items per player is enough to get things rolling. There are no rules other than both parties must agree to any trade. Team, club, state, or tournament T-Shirts are highly valued. Cowboy hats from Texas teams have always proven to be popular but may come at the high cost of multiple T-Shirts or something equally valued. If you're looking for suggestions on items to trade, mini soccer balls, lapel pins from your club or state, or any similar items are perfect. If there is something famous that comes from your state that travels well, that's always welcomed. The possibilities are only limited by your imagination. Don't break the team budget with these items, there are options where you can source inexpensive goodies. Many have found that local businesses love to help support teams playing for a National Championship.

Schedule for Player Event

- | | |
|---------|---|
| 2:00PM: | Hartman Arena doors open. A Coach or Team Manager should pick up the team goody bag at their regional table located in front of the concession stand nearest their seats. |
| 3:00PM: | Teams should be seated in their assigned sections of the Arena. |
| 3:15PM: | Player Event begins. |

Seating Assignments in the Hartman Arena

- East teams should sit in sections 102 & 103
- Midwest teams should sit in sections 105 & 106
- South teams should sit in sections 110 & 111
- Far West teams should sit in sections 113 & 114
- Parents may sit in sections 101, 104, 107, 108, 109 112 and 115.

The Hartman Arena seating chart is on the following page.

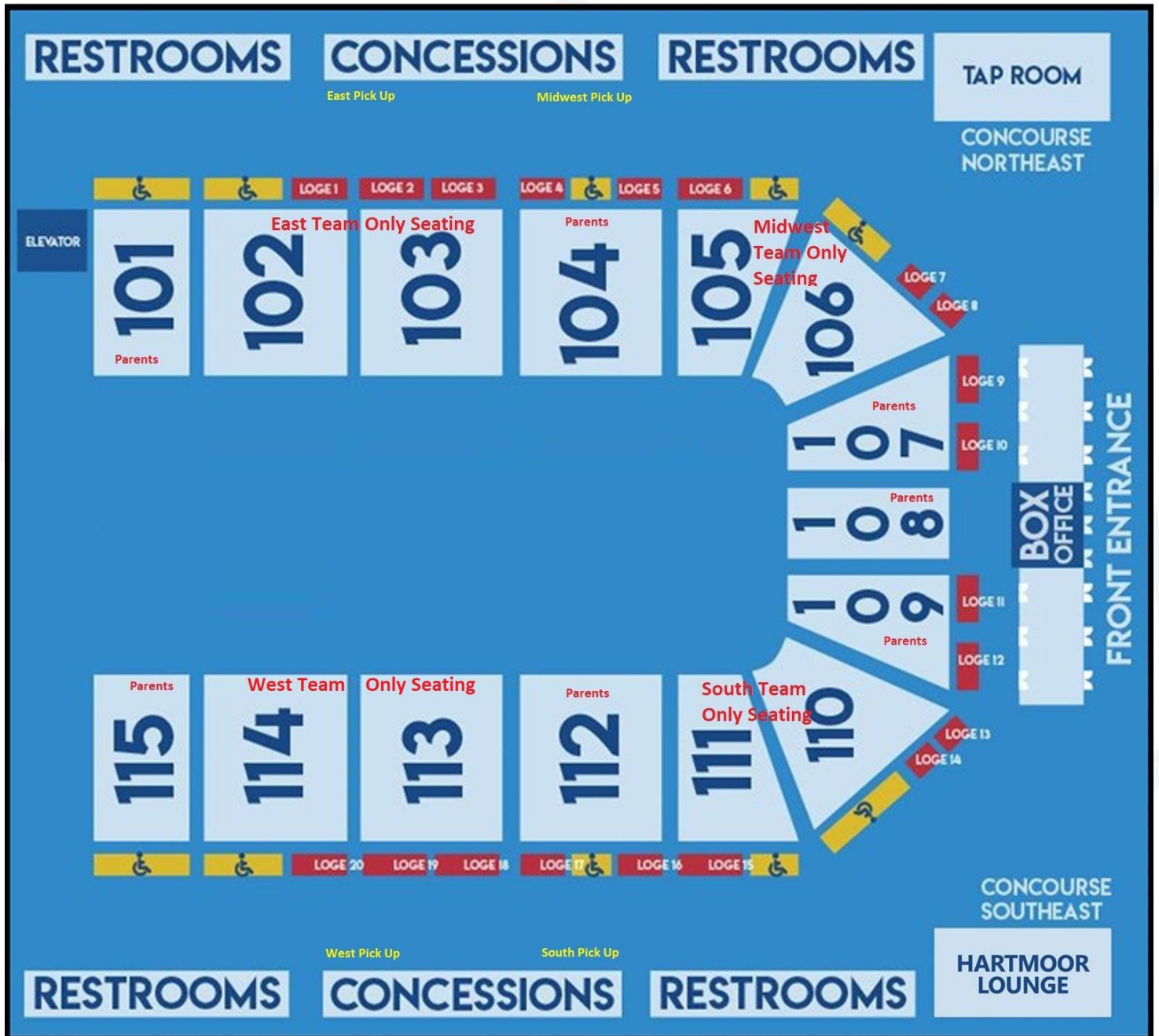


#CLAIMTHECUP





Hartman Arena seating chart.



#CLAIMTHECUP





TEAM INFORMATION 716 UNIFORMS

Each team must have two (2) uniform sets, including socks, (one light color and one dark color at *each match* during the competition. Generally accepted light colors include, but are not limited to, white, light grey, sand, sky blue, yellow, gold, pink, and light green. Generally accepted dark colors include, but are not limited to, black, dark grey, dark brown, navy blue, red, maroon, dark green and deep purple.

No later than 11:59PM Thursday July 4, 2024, please use [this link](#) to submit the uniform colors the team will utilize at the competition.

- The home team (listed first in the schedule) is required to wear their light color jersey & socks.
- The away team (listed second in the schedule) is required to wear their dark color jersey & socks.
- Matching shorts *are not* required. The same color shorts can be utilized for both uniforms.

If, in the opinion of the referee, there is a jersey or sock color conflict, the team causing the conflict must change. The referee's decision is final. Any failure to comply may result in sanctions, loss of team subsidies, and/or fines levied against the offending team. Reminder, teams are required to bring both color uniforms and socks to all matches.

Uniforms numbers must be a minimum of six (6) inches in size. Each field player must have a number permanently affixed to the back of their jersey which must be clearly visible. Goalkeepers must wear colors that distinguish them from other players and referees. Numbered jerseys for goalkeepers are optional but are recommended.

Duplicate and/or taped numbers are prohibited, and any non-compliant jersey must be remedied as soon as practical.

TEAM INFORMATION 717 UNIFORM LOGOS, MARKINGS & SPONSORS

At every level of the National Presidents Cup competitions, a player or team official may have a name, logo, or other identifying mark from US Youth Soccer, a US Youth Soccer State Association, or other affiliated league or program.

Any name, logo, or other identifying mark of a competing youth soccer organization, league or group must be removed, replaced, or covered before the player or team official may continue to remain at the game site for the match or associated activity.

If a player or team official chooses to not remove any identifying name, mark or logo of any other youth soccer organization, it must be completely covered by another patch. At the event, USYS can supply semi-permanent patches to cover non-compliant markings or logos. The cost is \$75.00 per team (for 44 patches) or \$3.00 per patch, payable in cash. Covering non-complaint marks with tape is not permitted.

A player or team official may also have a logo or name on clothing being worn at a match, provided that it is related to an item or service that is appropriate for youth. Any inappropriate mark or name must be removed, replaced, or covered before the player or team official may continue to participate in the match. Examples of inappropriate marks or names would be tobacco products, alcoholic beverages, etc. If there is any question about a logo, marking or sponsor, it is **strongly** suggested that you inquire well in advance of the start of the event to avoid an issue at the field.

Please note that these policies will be strictly enforced for participants at all levels of the US Youth Soccer National Presidents Cup competitions.



#CLAIMTHECUP





TEAM INFORMATION 718 UNIFORM PATCHES

As teams advance through the US Youth Soccer National Presidents Cup competitions, they may be presented with various uniform patches. Before a team affixes any of these patches to their uniforms, they should be aware that the teams that advance to the National Presidents Cup competition must wear the National Presidents Cup patch they will be provided, as outlined below. Although teams may utilize the other patches they were presented if they choose, it is suggested that teams leave sufficient space for the National Presidents Cup patch.

Important: All team member uniforms must have the National Presidents Cup patch permanently affixed in the same location.

National Presidents Cup patches may be placed:

- On the right or left sleeve of the jersey, approximately 1" above the bottom edge of the sleeve with the patch facing outwards. For long sleeve jerseys, (for example a Goalkeeper jersey) place the patch in approximately the same spot as if it were a short sleeve jersey.
- On the right or left leg of the shorts, approximately 1" above the bottom edge of the hem with the patch facing forward.

These options are provided to avoid conflict with sponsor logos, player numbers, etc. However, as outlined above, all uniforms must have each patch permanently affixed in the same location.

Two (2) sets of patches, (44 per team), were supplied to each advancing team at their Regional Presidents Cup. Extra patches are not available.



TEAM INFORMATION 719 GENERAL EXPECTATIONS

Teams and players competing in the US Youth Soccer National Presidents Cup are representatives of their State Association and Region. The Presidents Cup Management Group expects exemplary behavior from everyone participating in the event, including parents and spectators. Above all, we expect and demand the proper respect for an opponent on the field. This also includes sportsmanlike behavior on the field, respect for referees and opposing coaches, event staff and volunteers.

Coaches should review with their team how to stop play for an injured player, the proper restart that respects the injury, how to participate in the pre-match walkout, how to win with humility, and how to lose with dignity. Team officials are expected to always act as chaperones for players during the National Presidents Cup. Team officials must accompany players to all scheduled events.



#CLAIMTHECUP





TEAM INFORMATION 720 TEAM & PLAYER BEHAVIOR

Players and team officials are expected to adhere to the standards of conduct outlined below. Violation of these standards can jeopardize continued participation in the National Presidents Cup competition and may result in forfeiture of any travel subsidies provided by US Youth Soccer and/or your State or Region.

No later than 11:59PM Thursday July 4, 2024, please provide the team subsidy mailing information at [this link](#).

Teams are required to stay in the lodging provided or arranged for them by US Youth Soccer. No camping, no changing hotels. No exceptions.

Teams are expected to be present on the field at the designated time for all matches. Players shall conduct themselves in a mature manner when in hotels and public areas both at and away from the playing fields. Disruptive behavior, including but not limited to, violations of hotel policies and/or fraternizing in hotel rooms will not be tolerated. No alcoholic beverages, tobacco products, or other intoxicants shall be in the possession of players.

A player or team official found using, providing, or in the possession of illegal drugs, alcohol or in violation of any US Youth Soccer rule, may result in disciplinary action up to and including disqualification from the event.

A player or team official who has violated local ordinances (including, but not limited to, theft or willful destruction of property) may result in disciplinary action up to and including disqualification from the event.

A player, team official or spectator who physically or verbally attacks another player, team official, spectator, referee or other competition official may result in disciplinary action up to and including disqualification from the event.

Players and team officials are expected to cooperate with and be courteous to all event personnel and dignitaries. This includes referees, field marshals and all other event volunteers.

A maximum of four (4) team officials will be allowed on the team bench during matches. Team officials are expected to cooperate with match officials and to follow all established protocols and/or procedures. Excessive coaching will not be permitted from the touchlines. Degrading remarks directed toward players, opponents, or match officials (in any language) may result in disciplinary action.

The above standards shall be in force any time the team is in any venue of the US Youth Soccer National Presidents Cup competitions.



#CLAIMTHECUP





TEAM INFORMATION 721 SPECTATOR CONDUCT

Parents and/or spectators who can reasonably be considered to be affiliated with a team are considered a part of that team, and the actions of those individuals are the responsibility of the credentialed team officials appearing on the roster.

No spectators are permitted anywhere behind the goal line during a match. The spectator area is located on the opposite side of the field from the technical/bench area. The spectator area is behind a line marked three (3) yards beyond the touchline and extends from a point three (3) yards from the center line down to the corner flag. This configuration provides a six (6) yard buffer zone between spectators along the touchline. Spectators must remain in the spectator area, in the half of the field directly across from their team's bench, subject to the following exception.

It is expected that respect for the game and players will prevail if a limited number of spectators wish to *quietly* observe the match at the far end of the opposing spectator section (for example, the Goalkeeper's parents). In the event of disruptive behavior by these spectators, a referee or competition official may require them to return to their designated area and restrict any further sideline movement of spectators.

Technical instruction, provocative or unsportsmanlike behavior by any spectator may result in 1) their removal from the complex or 2) the removal of ALL spectators, either from one or both teams, for the remainder of the match. Any spectators asked to leave by law enforcement, security, referees, or any other event official must immediately depart the field area and remain out of sight and sound of the match. Ejected spectators may not return to the field at the conclusion of the match. The actions of spectators could result in disciplinary action imposed upon the team, up to and including disqualification from the competition.

Whistles, air horns, megaphones, artificial noisemakers and/or similar devices are prohibited at all National Presidents Cup competitions. Air horns are for use solely by competition officials to signal when fields must be cleared due to inclement or dangerous weather conditions.



#CLAIMTHECUP





TEAM INFORMATION 722 REFEREES

Similar to the path that teams took to advance to the National Presidents Cup, each referee in attendance has earned their place based on outstanding performances at one of the four Regional Presidents Cup competitions. Simply put, these referees are among the best qualified in the entire country. They are supported by senior referee coaches and mentors who help their development by guiding them in post-match reflections and reviewing their performance. Please refrain from criticizing the officials throughout the competition.



TEAM INFORMATION 723 PRACTICE

Team practices are allowed before the competition begins, on Wednesday July 10th or Thursday July 11th. Practice times are 1 hour in length, must take place on the field assigned to the team. A half field with goal will be provided, but teams must supply their own practice equipment and beverages. If your team is interested in setting up a practice time, no later than 11:59PM on Sunday, July 7, 2024, please use [this link](#) to set up a practice time. Please complete all information on the form to reserve a practice time. Practice fields will be at the Stryker Sports Complex. Final practice field assignments will be communicated closer to the start of the competition.

Scheduled practices are subject to cancellation if it interferes with any other competition event or operation, including weather.

TEAM INFORMATION 724 TEAMS TRAVELING BY BUS

Teams traveling by bus should enter the Stryker Sports Complex via the main entrance and drop their passengers off near the match field. Busses should park on the street just outside the south entrance/exit to the Stryker Sports Complex.



#CLAIMTHECUP





TEAM INFORMATION 725 SEVERE WEATHER & EVENT NOTIFICATIONS

If lightning or severe weather approaches the complex, play will be stopped and all athletes, coaches and spectators must immediately clear the fields and remain in vehicles until the all-clear is given. If possible, event personnel will be deployed to aid those that may need help getting to their vehicles.

Teams traveling by bus should immediately evacuate to their bus for the duration of the interruption.



Inclement weather announcements and other important competition information will be broadcast using WhatsApp. Your carrier may impose message and/or data charges. If you consent to receive messages during the National Presidents Cup competition, scan the QR code above or click on [this link](#).



#CLAIMTHECUP





TEAM INFORMATION 726 PLAYING VENUE

The fields at the Stryker Sports Complex are artificial turf and measure 75 yards wide by 115 yards long. The stadium field (Field 1) is 75 yards wide by 120 yards long. There is one (1) indoor field that will also be utilized during the competition.

Concession stands will be open during matches and will offer a variety of food and beverage items for sale. There are permanent and portable bathroom facilities throughout the complex.

TEAM INFORMATION 727 LOCAL ATTRACTIONS

For a variety of local attractions, dining options and other items of interest, please go to the [Visit Wichita](#) website, which has a variety of information that you may find helpful.

TEAM INFORMATION 728 HOSPITAL & URGENT CARE FACILITIES

The information below is provided for your convenience.

Hospitals

- Wesley Woodlawn Hospital & ER, 2610 N. Woodlawn Blvd, Wichita, KS, 67220
- Kansas Medical Center, 1124 W. 21st St. Andover, KS 67002
- Select Specialty Hospital, 929 N. St. Francis Street N., Tower 6th Floor, Wichita, KS, 67214
- Rock Regional Hospital, 3251 N. Rock Rd., Derby, KS, 67037
- Wesley Medical Center, 550 N. Hillside St., Wichita, KS, 67214
- Ascension Via Christi St. Francis, 929 St. Francis, Wichita, KS 67214
- Ascension Via Christi Teresa, 14800 St. Teresa St, Wichita, KS, 67235
- Ascension Via Christi St. Joseph, 3600 E. Harry St., Wichita, KS, 67214

Urgent Care

- The Little Clinic, 7707 E. Central Ave, Wichita, KS, 67206
- Immediate Medical Care-IMC East, 5838 E. Central Ave, Wichita, KS 67208
- Ascension Via Christi Immediate Care on Murdock, 3311 E. Murdock St., Wichita, KS, 67208
- AFC Urgent Care Wichita, 3161 N. Rock Rd, Suite A, Wichita, KS, 67226



#CLAIMTHECUP





TEAM INFORMATION 729 MATCH DAY PROCEDURES

Teams should come to the fields dressed in the appropriate (dark or light) uniform and bring the alternate kit to the field.

Before each match, member passes must be provided to the referees, who will verify them during the check in procedure. A maximum of 18 players may be dressed for a match. If the roster has more than 18 players, a credentialed team official must inform the referee which players are not participating, and they will be crossed off the match card. Rostered players not participating may sit on the team bench in street clothes. Non-participating players may wear their team jersey along with a different color vest than the substitutes on the bench. Non-participating players may not wear shirts that are the same color as the opposing team jerseys.

If unusual or extenuating circumstances exist, and to ensure the orderly progression of the event, electronic member passes may be utilized if approved by the Chair of the event Presidents Cup Management Group or their designee. Printed member passes must be provided as soon as practical.

Prior to every match, all rostered players (including any that are not dressed out for the match) will take part in an International Walkout. The walkout is scheduled to begin 3 minutes prior to kick off.

Tents will be located over each team bench to provide shade. Please do not change the tent settings.

Water coolers will be provided at team benches, but players must provide their own container to fill. Water breaks (3 minutes maximum) will be implemented if deemed necessary by the Presidents Cup Management Group. Players may leave the field and it is a substitution opportunity if desired. The referee will add time to the half to compensate.

US Youth Soccer will supply each team with vests which should be worn by substitutes in the bench area during matches. These vests are a gift to the team.

If a player is sent off by the referee, that player may remain on the team bench. Should that player's behavior subsequently become a disturbance and the player is dismissed by the referee, a credentialed team official must escort and remain with the player at a location out of sight and sound of the field until the referee crew has departed the field of play after the match.

If a team official is dismissed by the referee, he or she must leave the vicinity of the field before the match will be restarted. The dismissed team official must also remain out of sight and sound of the field until the referee crew has departed the field of play after the match.

After each match, please ensure that the team bench area is clean, and that you vacate the sideline as quickly as possible, so the next team playing can get settled.

US Youth Soccer Concussion Protocols are utilized during the National Presidents Cup competition, including a mandatory medical release to return to play. The host state may have additional laws or procedures regarding Concussions which must also be followed.



#CLAIMTHECUP





TEAM INFORMATION 730 INDIVIDUAL AWARDS TO PLAYERS

A Best 11 award for each age group/gender will be presented to the top players in the competition based on voting throughout the competition. Players selected for the Best 11 are based on coaches ranking the players on their own team. Teams are strongly encouraged to submit their voting form at each match they play.

Golden Boot and Golden Glove honors will be presented to the top scorer and the outstanding goalkeeper in each age group/gender, and the Most Valuable Player award will be presented to the highest rated player in the Best 11.

Important Note: A player ejected from a match is not eligible to receive any individual award.

Individual awards are based on voting during the competition, and players from any team are eligible to win. Ties are broken by utilizing various criteria and can (but not necessarily) involve participation or performance in championship matches.

All individual awards will be publicly announced and sent to winners as soon as possible after the conclusion of the competition; however, the process could take up to 6 weeks.

TEAM INFORMATION 731 CHAMPION & FINALIST AWARD CEREMONY

The Champion and Finalist in each age group/gender will participate in an awards ceremony on the awards stage, located on the indoor field, at the conclusion of their championship match. Both teams should make their way to the awards area as quickly as possible after the conclusion of the match. Please do not take time to discuss the just completed match with the team on the field after it ends. Many people are depending on you to get your team to the awards ceremony promptly. There will be time after the awards ceremony for a final talk with your players.

Staging areas will be set up so players can get off their feet and cool off. Be ready to move to the stage when your age group is called.

The finalist will be on stage first, followed by the champion. Awards will be presented to players and coaches on both teams, along with a trophy or plaque commemorating the team's achievement.

Additionally, each champion will be presented the perpetual US Youth Soccer trophy for their age group/gender, which will be engraved with their team's name and reside at the US Youth Soccer National Office.

After photographs are taken with the perpetual trophy, it must be returned to the awards area! Please do not remove it from the soccer complex.



#CLAIMTHECUP





TEAM INFORMATION 732 SCHEDULE OF EVENTS

Date	Time	Event
Thursday, July 11, 2024	2:00PM	Doors to Arena Open & Team Goody Bag Distribution to Team Managers
	3:00PM	Teams should be seated in their assigned Regional sections
	3:15PM	Opening Ceremony/Player Event Begins
Friday, July 12, 2024	Various	Group Play Day # 1 Stryker Sports Complex
Saturday, July 13, 2024	Various	Group Play Day # 2 Stryker Sports Complex
Sunday, July 14, 2024	Various	Group Play Day # 3 Stryker Sports Complex
Monday, July 15, 2024	Various	13U-18U Semifinals & 19U Finals Stryker Sports Complex
Tuesday, July 16, 2024	Various	Championship Matches Stryker Sports Complex



#CLAIMTHECUP





TEAM INFORMATION 733 MATCH SCHEDULES

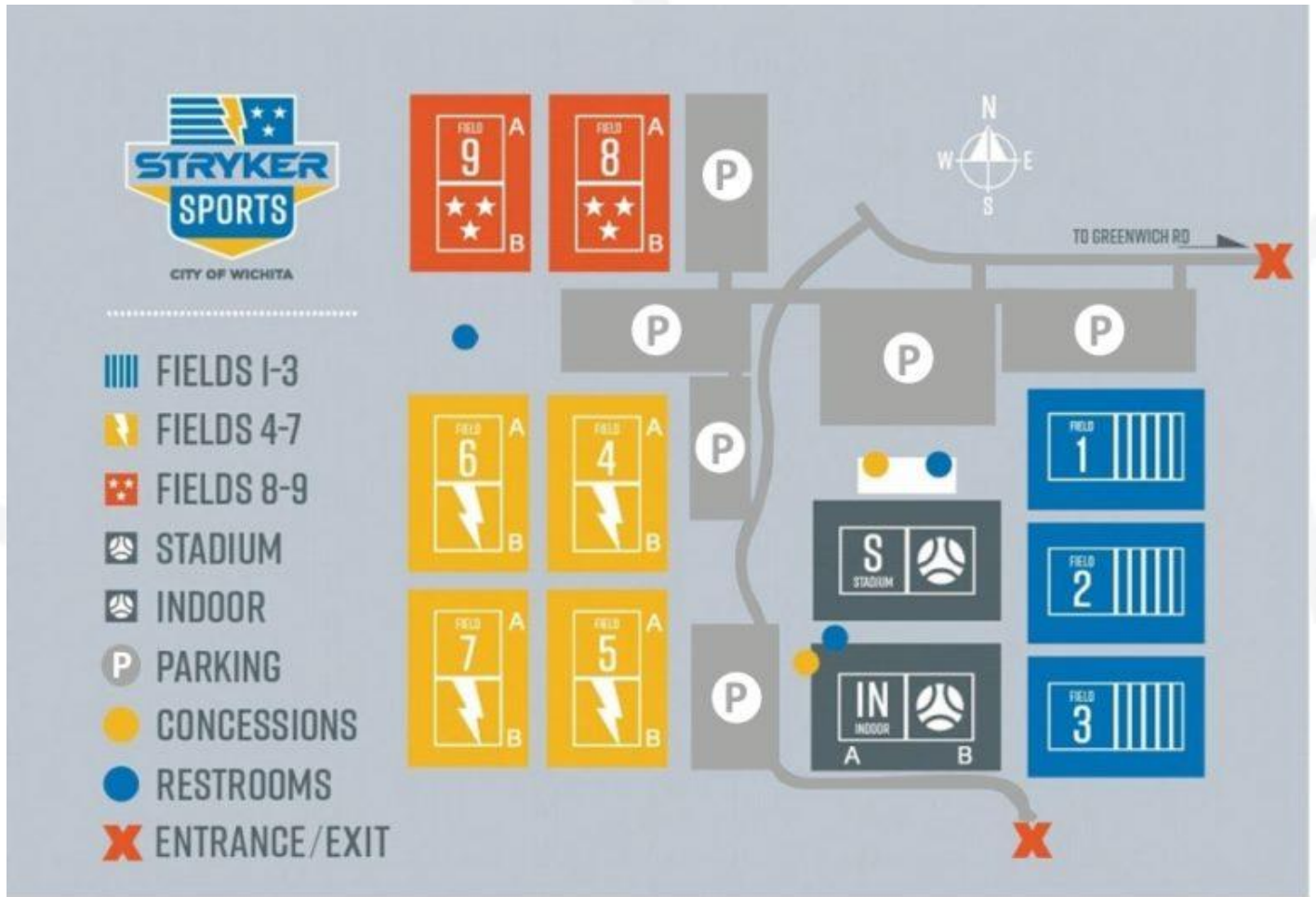
2024 National Presidents Cup Field Grid

Fri 7/12	Field 1	Field 2	Field 3	Field 4	Field 5	Field 6	Field 7	Field 8	Field 9	Stadium	Indoor
8:00 AM	16B	16B	16B	16B	17B	17B	17B	17B	18G	18G	18G
10:00 AM	17G	17G	17G	17G	16G	16G	16G	16G	18B	19B	19B
12:00 PM	15G	15G	15G	15G	15B	15B	15B	15B	18G	19G	19G
2:00 PM	13G	13G	13G	13G	14G	14G	14G	14G	18B	18B	18B
3:30 PM	13B	13B	13B	13B	14B	14B	14B	14B			
Sat 7/13	Field 1	Field 2	Field 3	Field 4	Field 5	Field 6	Field 7	Field 8	Field 9	Stadium	Indoor
8:00 AM	15B	15B	15B	15B	15G	15G	15G	15G	18B	19B	19B
10:00 AM	17B	17B	17B	17B	16B	16B	16B	16B	18G	19G	19G
12:00 PM	16G	16G	16G	16G	17G	17G	17G	17G	18B	18B	18B
2:00 PM	14B	14B	14B	14B	13B	13B	13B	13B	18G	18G	18G
3:30 PM	14G	14G	14G	14G	13G	13G	13G	13G			
Sun 7/14	Field 1	Field 2	Field 3	Field 4	Field 5	Field 6	Field 7	Field 8	Field 9	Stadium	Indoor
8:00 AM	17G	17G	17G	17G	16G	16G	16G	16G	18G	19G	19G
10:00 AM	15G	15G	15G	15G	15B	15B	15B	15B	18B	18B	18B
12:00 PM	16B	16B	16B	16B	17B	17B	17B	17B	18G	18G	18G
2:00 PM	13G	13G	13G	13G	14G	14G	14G	14G	18B	19B	19B
3:30 PM	13B	13B	13B	13B	14B	14B	14B	14B			
Mon 7/15	Field 1	Field 2	Field 3	Field 4	Field 5	Field 6	Field 7	Field 8	Field 9	Stadium	Indoor
8:00 AM	17G SF	17G SF	16G SF	16G SF	16B SF	16B SF	17B SF	17B SF		19G F	Awards
11:00 AM	13B SF	13B SF	18B SF	18B SF	15B SF	15B SF	13G SF	13G SF		19B F	Awards
2:00 PM	14B SF	14B SF	15G SF	15G SF	14G SF	14G SF	18G SF	18G SF			Awards
Tue 7/16	Field 1	Field 2	Field 3	Field 4	Field 5	Field 6	Field 7	Field 8	Field 9	Stadium	Indoor
7:45 AM			13B F							18B F	Awards
8:15 AM		13G F									Awards
8:30 AM					15B F				17G F		Awards
9:00 AM	16G F										Awards
9:30 AM						14G F					Awards
9:45 AM				15G F							Awards
10:15 AM								14B F			Awards
10:30 AM			17B F				16B F				Awards
10:45 AM										18G F	Awards

The schedule is final, and the only changes that will be made are due to inclement weather or other unforeseen circumstances.



TEAM INFORMATION 734 FIELD MAP



Stryker Sports Complex



TEAM INFORMATION 735 SPORTS MEDICINE INFORMATION

Soccer is an endurance sport consisting of moderate activity levels interspersed with brief high intensity bursts. This type of activity leads to a high rate of heat production within the body. Mid July temperatures can be in the 90's or above, and considering the heat index, the "feels like" temperature could easily be above 100 degrees.

Heat related illnesses occur when the body generates more heat than it can get rid of. Generally, this happens when the temperature within the body rises too high. The heat related illness can take on one of three forms: heat cramps (mildest and most common), heat exhaustion (very serious, could lead to other problems), or heat stroke (extremely serious, could cause death).

Heat cramps are muscle cramps that occur during or immediately following heavy exertion in hot or humid weather. These cramps can occur in one or several different muscles, with the leg muscles being the most common site. Heat cramps are warnings that more severe heat related problems are possible but can be avoided if appropriate actions are taken.

Heat exhaustion is an indication that the body's cooling system is not working properly. This will produce varied symptoms, but most often a person will feel nauseated, disoriented, and/or weak. The skin is usually cold and clammy. When either of these conditions occur, one should move to a cool, shaded area, drink plenty of cold water, and rest. Avoid any further activity for 24 hours and seek medical assistance if symptoms continue.

Heat stroke occurs when there is a complete shutdown of the body's cooling system and requires immediate medical attention. The victim will often go into shock or even lose consciousness. Additionally, the skin will generally be hot and dry. If the person's body temperature is not lowered immediately, heat stroke may cause death. Cool the person's body rapidly and call for emergency medical assistance.

It is suggested that players begin hydrating their bodies a minimum of one week prior to the competition (longer is better) and that they eat a nourishing meal before each match.



#CLAIMTHECUP





TEAM INFORMATION 736 FREQUENTLY ASKED QUESTIONS

➤ Can we check in at the Hotel early?

All hotels utilized during the National Presidents Cup event experience a constant flow of guests. Please refer to the hotel website or call the hotel for more information.

➤ How do we handle rooming list changes?

Please do not contact the hotel to make or change your reservation. For assistance, please contact Owen Roche or Will Gibson (usyouth@onlocationexp.com or 855-665-3287).

The hotels will not receive your reservation information until quite close to your arrival date.

➤ Does our team receive a travel subsidy?

Teams that comply with all rules and procedures during the National Presidents Cup will qualify for a \$500 travel subsidy. Depending on the policy of your Region, teams may (or may not) receive an additional subsidy.

Team subsidy mailing information should be entered at [this link](#) no later than 11:59PM Thursday July 4, 2024

Actions that may result in forfeiture of all or part of any team subsidies include, but are not limited to:

- Failure to complete the event survey, which will be released after the conclusion of the competition. This survey is mandatory to qualify for any team stipends.
- Teams not staying in their assigned hotels.
- Damage to hotel or other facilities
- Ethics, disciplinary or behavior violations
- Team bench left in disarray after matches.
- Failure to submit all requested forms and information by the published deadlines.
- Teams not attending the award ceremony.
- Teams practicing at unassigned times and/or on fields not assigned to them.

➤ How many bench credentials can my team receive?

Each team can receive up to 4 credentials for bench personnel that are listed on the roster.

➤ When and where can players get taped/wrapped for matches?

Trainers are on site during all matches with supplies to cover injuries that may occur. Ice will be available for injuries at each field during the matches. Trainers will be available at the medical tents one hour before the first match kicks off, during, and immediately after all matches. If an athlete needs to be taped, please ensure they arrive well in advance of the start time of their match, as there may be other players waiting. If your team or club utilizes its own trainers, the official event trainers are in charge and make all decisions regarding treatment.

➤ Can I film matches from the spectator sideline?

Yes, as long as any scaffolding or support equipment is securely anchored and does not interfere with any other spectators' view of the match.

➤ Can I use a Drone to film matches?

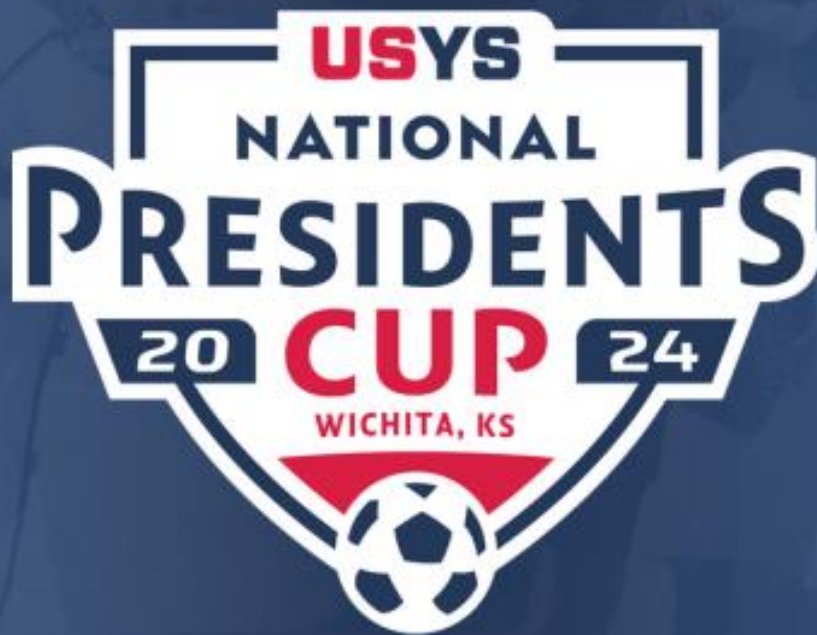
No. The use of non-approved Unmanned Aircraft Systems (UAS), more simply known as a Drone, at any event that is sanctioned by US Youth Soccer is strictly prohibited. The use of any UAS at any US Youth Soccer event must be approved by US Youth Soccer for a specified promotional activity at an event, in a designated area or areas that are away from youth soccer players, spectators and over any field for play or practice. Any person violating this policy shall be immediately removed from the event by the US Youth Soccer authority managing the event.



#CLAIMTHECUP



#CLAIMTHECUP



**FREE EVENT
PHOTOS**

CONNECT WITH **USYS**
@USYOUTHSOCCER



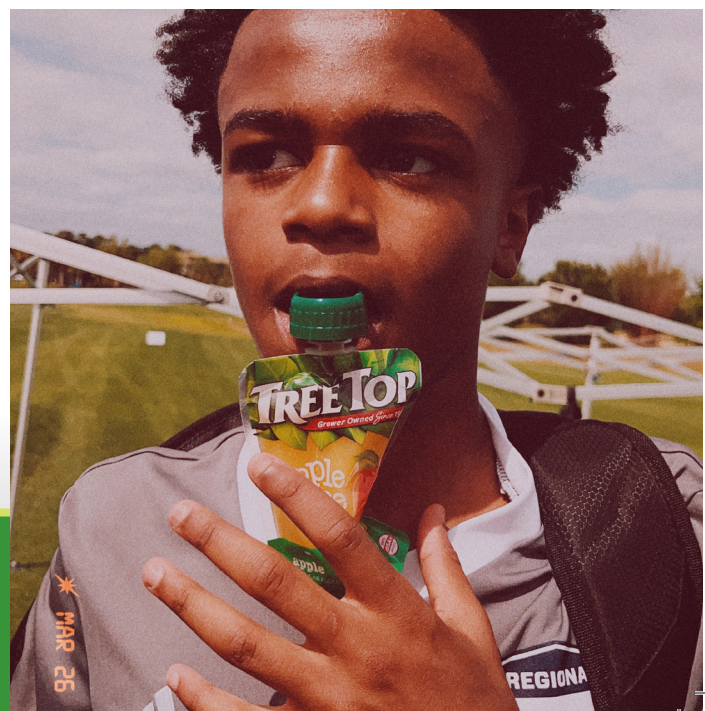


We're helping kids achieve their GOOOAAALLS!

Tree Top has been a favorite snack of America's youngest athletes for decades. Now we're taking it to the next level as the exclusive juice and snack partner of US Youth Soccer!

Game time. Halftime. Anytime.

Whether you're fueling up for the big game, celebrating after a big win or just enjoying them for kicks, you can't beat the real fruit goodness of Tree Top apple juice and apple sauce.



Learn more at treetop.com



US YOUTH SOCCER

GET YOUR OFFICIAL USYS GEAR TODAY!

***US YOUTH SOCCER HAS TEAMED UP WITH TEAM IP,
THE #1 SPORTS EVENT MERCHANDISER IN THE U.S.***



***TEAM IP, AS THE US YOUTH SOCCER
ONLINE AND ONSITE OFFICIAL MERCHANDISER
WILL BE SUPPORTING THE US YOUTH SOCCER
SCHEDULE FOR 2023-2024 ALONG WITH ITS OFFICIAL
MERCHANDISE WEBSITE AT [SHOP-USYS.COM](https://shop-usys.com)***



SHOP-USYS.COM | TEAMIP.COM

In Case of Emergency

WICHITA WEST SIDE AREA



Hospitals Nearby?

Ascension Via Christi St. Joseph
3600 E. Harry Wichita, KS 67218
(316) 268-5000

Ascension Via Christi St. Francis
929 N. St. Francis Wichita, KS 67214
(316) 268-5000

Ascension Via Christi St. Teresa
14800 W. Saint Teresa Wichita, KS 67235
(316) 796-7000

Ascension Via Christi Cancer Center
825 N. Emporia Wichita, KS 67214
(316) 268-5927

Ascension Via Christi Rehabilitation Hospital
1151 N. Rock Rd. Wichita, KS 67206
(316) 268-5000

Wesley Medical Center
550 N. Hillside Wichita, KS 67214
(316) 962-2000

Wesley Woodlawn Hospital & ER
2610 N. Woodlawn
(316) 858-2610

Wesley Rehabilitation Hospital
8338 W. 13th St. N. Wichita, KS 67212
(316) 729-9999

Robert J. Dole VA Medical Center
5500 E. Kellogg Dr. (Veterans only)
(316) 685-2221



Dry Cleaner Nearby?

Usave Cleaners
7825 W. Maple St. #108, Wichita, KS 67209
(316) 773-7283



Urgent Care Nearby?

Immediate Medical Care- IMC West
4722 W. Kellogg Dr., Wichita, KS 67209
(316) 440-2565



Pharmacies Nearby?

Walgreens Pharmacy
555 N. Maize Rd. Wichita, KS 67212
(316) 729-6171

Dillons Pharmacy
10515 W. Central Ave., Wichita, KS 67212
(316) 729-0431



Grocery Store Nearby?

Walmart Grocery Pickup and Delivery
6110 W. Kellogg Dr., Wichita, KS 67209
(316) 779-3839

Dillons Food Store
3211 S. Seneca St., Wichita, KS 67217
(316) 522-4404

We hope you never need to use this, but in the event of an emergency, please find this helpful list of contact information for your convenience.



Your friends at Visit Wichita

In Case of Emergency

WICHITA EAST SIDE AREA



Hospitals Nearby?

Ascension Via Christi St. Joseph

3600 E. Harry Wichita, KS 67218
(316) 268-5000

Ascension Via Christi St. Francis

929 N. St. Francis Wichita, KS 67214
(316) 268-5000

Ascension Via Christi St. Teresa

14800 W. Saint Teresa Wichita, KS 67235
(316) 796-7000

Ascension Via Christi Cancer Center

825 N. Emporia Wichita, KS 67214
(316) 268-5927

Ascension Via Christi Rehabilitation Hospital

1151 N. Rock Rd. Wichita, KS 67206
(316) 268-5000

Wesley Medical Center

550 N. Hillside Wichita, KS 67214
(316) 962-2000

Wesley Woodlawn Hospital & ER

2610 N. Woodlawn
(316) 858-2610

Wesley Rehabilitation Hospital

8338 W. 13th St. N. Wichita, KS 67212
(316) 729-9999

Robert J. Dole VA Medical Center

5500 E. Kellogg Dr. (Veterans only)
(316) 685-2221



Dry Cleaner Nearby?

All Star Dry Cleaning and Laundry

343 S Greenwich Rd., Wichita, KS 67207
(316) 651-5700



Urgent Care Nearby?

The Little Clinic

7707 E. Central Ave., Wichita, KS 67206
(316) 651-2500

Med-Ped Clinic of Wichita

9415 E. Harry St. #202, Wichita, KS 67207
(316) 202-9732



Pharmacies Nearby?

Dillons Pharmacy

7707 E. Central Ave., Wichita, KS 67206
(316) 651-2703

Walgreens Pharmacy

1625 S. Webb Rd., Wichita, KS 67207
(316) 652-9147



Grocery Store Nearby?

Dillons Food Store

9450 E Harry St, Wichita, KS 67207
(316) 651-2720

Walmart Supercenter

11411 E. Kellogg Dr. N., Wichita, KS 67207
(316) 683-0735

We hope you never need to use this, but in the event of an emergency, please find this helpful list of contact information for your convenience.

Your friends at Visit Wichita



In Case of Emergency

WICHITA DOWNTOWN/OLD TOWN AREA



Hospitals Nearby?

Ascension Via Christi St. Joseph
3600 E. Harry Wichita, KS 67218
(316) 268-5000

Ascension Via Christi St. Francis
929 N. St. Francis Wichita, KS 67214
(316) 268-5000

Ascension Via Christi St. Teresa
14800 W. Saint Teresa Wichita, KS 67235
(316) 796-7000

Ascension Via Christi Cancer Center
825 N. Emporia Wichita, KS 67214
(316) 268-5927

Ascension Via Christi Rehabilitation Hospital
1151 N. Rock Rd. Wichita, KS 67206
(316) 268-5000

Wesley Medical Center
550 N. Hillside Wichita, KS 67214
(316) 962-2000

Wesley Woodlawn Hospital & ER
2610 N. Woodlawn
(316) 858-2610

Wesley Rehabilitation Hospital
8338 W. 13th St. N. Wichita, KS 67212
(316) 729-9999

Robert J. Dole VA Medical Center
5500 E. Kellogg Dr. (Veterans only)
(316) 685-2221



Dry Cleaner Nearby?

In the Bag Cleaners
1021 E. Douglas Ave. Wichita, KS 67211
(316) 260-6290



Urgent Care Nearby?

MedExpress Urgent
3006 S. Seneca St. Wichita, KS 67217
(316) 522-4632

ICT Immediate Care
7011 W. Central Ave. Ste. 125 Wichita, KS 67212
(316) 252-8900



Pharmacies Nearby?

Walgreens Pharmacy
3333 E. Central Ave. Wichita, KS 67208
(316) 682-2999

Dillons Pharmacy
3020 E. Douglas Ave. Wichita, KS 67214
(316) 681-6830



Grocery Store Nearby?

Dillons Food Store
3020 E. Douglas Ave. Wichita, KS 67214
(316) 681-6830

Walmart Supercenter
501 E. Pawnee St. Wichita, KS 67211
(316) 267-2400

We hope you never need to use this, but in the event of an emergency, please find this helpful list of contact information for your convenience.

Your friends at Visit Wichita





WELCOME

U.S. YOUTH SOCCER NATIONAL PRESIDENTS CUP

From fine arts to fine fare, evenings out to sporting spectacles,
however you partake, you'll feel Wichita's energy at every turn.
Because we're a little bit fancy, a little bit funky and a whole lot of friendly.
We invite you to explore the city we love while you're here.
We have a feeling you'll love it too.



WICHITA
THE
Heart
OF THE COUNTRY

Scan this
QR code for
resources
to help you
explore
Wichita!





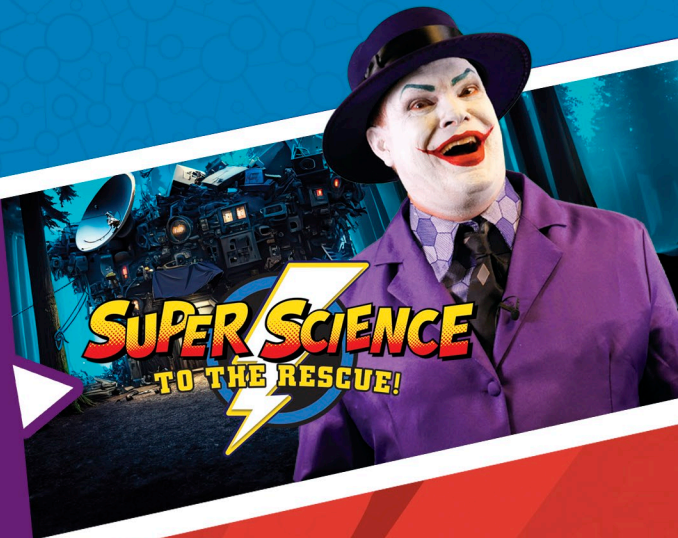
**EXPLORATION
PLACE**

**For US Youth Soccer's National
Presidents Cup Participants**

FREE LIVE SCIENCE SHOW
with exhibit purchase!

Present this ad at time of purchase to receive your free show.

**AN EXCITING SUMMER TRAVELING EXHIBIT
INCLUDED WITH EXHIBIT ADMISSION**



**DC SUPER
HEROES**

**DISCOVER YOUR
SUPERPOWERS**

Produced by The Children's Museum of Indianapolis



ADD A GIANT SCREEN DOME MOVIE



SEA LIONS

VOLCANOES

PLUS: THE AWARD-WINNING EXHIBIT
DESIGN BUILD FLY

WHERE KIDS RULE
A THREE-STORY ADVENTURE PLAY CASTLE

PLAY IN OUR HEALTH ARCADE
HEALTH INSIDE OUT

Discover more at
exploration.org

Local COFFEE SHOPS

COCOA DOLCE BRADLEY FAIR

Experience delicious specialty drinks from the trusted Macchiato, Cubano, Americano, Cappuccino and Lattes to an Affogato mixed with espresso and gelato.

cocoadolce.com
2132 N. Rock Ste. 100,
67206



AROMA COFFEEHOUSE

Aroma Coffeehouse exists to be a space of warmth and inspiration that serves excellent coffee, invites kind connections, and motivates the community. They offer complimentary peppernuts with every drink.

[aromacoffeehouse
wichita.com](http://aromacoffeehousewichita.com)
7348 W. 21st, 67205

FAIRMOUNT COFFEE CO.

Bringing together coffee, college kids and the community, Fairmount Coffee Co. is located near the Wichita State University campus.

fairmountcoffee.com
3815 E. 17th, 67208



COCOA DOLCE NEW MARKET SQUARE

Provides unique flavors, syrups and even alcohol shots. Specializes in chocolate, wine, spirits and chocolate pairings, and also have an impressive local beer selection.

cocoadolce.com
2441 N. Maize Ste. 123,
67205

IL PRIMO ESPRESSO CAFFE

The oldest coffee house in Wichita serving unique espresso. Their team of baristas are carefully trained and serve perfect espresso drinks.

ilprimoict.com
6422 E. Central,
67206
301 N. Main St.,
67202 (Inside the
Epic Building)



SCAN HERE
for more information
and an interactive
map of locations

Downtown COFFEE SHOPS



COCOA DOLCE - DOWNTOWN

Try a Turtle Affogato, Skinny Vanilla Latte, Vanilla Cold Brew with Soy Milk, Coconut Lavender Latte or Mayan Latte.

cocoadolce.com
235 N. Saint Francis, 67202



THE DONUT WHOLE

A fun coffee house, donut shop, art gallery and live music venue located in the Douglas Design District.

facebook.com/thedonutwhole
1720 E. Douglas, 67214



ESPRESSO TO GO GO

Serves specialty coffee with quick service at Wichita's only walk-up coffeeshop.

espressotogogo.com
102 N. St. Francis, 67202



COFFEE DAZE

A vibrant coffee shop in the heart of College Hill near downtown Wichita.

coffeeazeict.com
3236 E. Douglas, 67208



PENNANT COFFEE

Offers unique coffees from exciting origins, or just an easy-to-drink coffee.

pennantcoffeeroasters.myshopify.com
930 W. Douglas Ste. A, 67203



MOKAS CAFE

One of Wichita's newest coffee shops located near Riverfront Stadium.

mokasusa.com/locations/mokas-wichita
43 N. McLean Ste. 143, 67203



REVERIE COFFEE ROASTERS

Full-service specialty coffee roastery, bar and craft bake shop.

reverieroasters.com
2202 E. Douglas, 67214



THE COOP

Known for a wide variety of flavor and combinations making iced latte flights a fun way to try out new flavors.

coopks.com
2812 E. Douglas Ave., 67214



BOTANIC AT GROW

Offers a unique and botanically inspired coffee menu to keep you energized & rooted to nature.

growgiesenplantshop.com
320 S. Market Ste. 120, 67202



Visit **WICHITA**

515 S. Main Suite 115 • Wichita, KS 67202
VisitWichita.com • 316-265-2800

**\$5 OFF
REGULAR PRICES**

DISNEY'S
FROZEN

ENJOY A PERFORMANCE WITH
MUSIC THEATRE WICHITA

JULY 5TH-JULY 14TH
CENTURY II PERFORMING ARTS AND
CONVENTION CENTER

PROMOCODE: USYOUTH2024

RATED G. FULL-LENGTH MATINEES
ON SATURDAY, JULY 13 AND
SUNDAY, JULY 14 AT 2PM WILL BE
OPEN TO ALL PATRONS AGE 3 AND
UP, OTHERWISE AGES 5 AND OLDER.

ASL PROVIDED: JULY 6TH @ 2:00PM

ORGANIZE
YOUR
GROUP WITH
US AND SAVE
UP TO 20%
WITH A
PURCHASE
OF 10 OR
MORE.



CALL US NOW

316-265-3107
boxoffice@mtwichita.org
mtwichita.org



FLAG SWAG



You have likely seen Wichita's flag — the red, white and blue banner and symbol of city pride — waving throughout the city, painted on buildings or emblazoned on stickers, T-shirts, mugs and even sweet treats. We call this flag branded merchandise "flag swag" and you'll find it for sale at these local shops:

AIDA STENHOLM
3700 E. Douglas Ave., Ste 70
316-796-2147
aidastenhholm.com

BOTANICA WICHITA
701 N. Amidon St.
316-264-0448
botanica.org

BUNGALOW 26
613 W. Douglas Ave., Ste. B
316-440-4846
bungalow26.com

CHERI'S BAKERY
2121 N. Tyler Rd.
316-722-1190
cheris-bakery.com

CLIFTON COLLECTIVE/MINI CO.
3700 E. Douglas Ave., Ste 50
316-440-7046
cliftoncollective.com

COCOA DOLCE —

- **BRADLEY FAIR**
2132 N. Rock, Ste. 100
316-866-2906

- **DOWNTOWN**
235 N. St. Francis St.
316-854-3121

- **NEW MARKET SQUARE**
2441 N. Maize, Ste. 123
316-866-6337
cocoadolce.com

GENERATIONS ANTIQUES AND ARTISANS
767 N. West St.
316-260-9589
generations-of-wichita.com

GROW GIESEN PLANT SHOP/ BOTANIC
320 S. Market, Ste 120
316-869-7474
growgiesenplantshop.com

THE HEALTH CONNECTION

- 1709 W. Douglas Ave.
- 5321 E. Central, Ste. B
316-841-0003
thehealthconnection.online



515 S. Main St., Ste. 115 • Wichita, KS 67202
VisitWichita.com • 316-265-2800

FLAG SWAG



MID-AMERICA ALL-INDIAN MUSEUM



COCOA DOLCE

THE LOUD CICADA

2721 E. Central, Suite 113
316-209-9184
theloudcicada.com

LUCINDA'S

329 N. Mead St.
316-264-1080
lucindas.net

MID-AMERICA ALL-INDIAN MUSEUM

50 N. Seneca St.
316-350-3340
theindianmuseum.org

MUSEUM OF WORLD TREASURES

835 E. First St.
316-263-1311
worldtreasures.org

NIFTY NUT HOUSE

537 N. St. Francis St.
316-265-0571
niftynuthouse.com

PAPA'S GENERAL STORE

3700 E. Douglas, Ste. 30
316-351-8118
papaswichita.com

THE SPICE MERCHANT & CO.

1300 E. Douglas Ave.
316-263-4121
spicemerchant.com

SWEET N SAUCY

535 W. Douglas Ave., Ste. 110
316-351-8188
sweetsaucywichita.com

WICHITA ART MUSEUM

1400 W. Museum Blvd.
316-268-4921
wichitaartmuseum.org

WICHITA DWIGHT D. EISENHOWER NATIONAL AIRPORT GIFT SHOP

2277 Eisenhower Airport Pkwy.
316-946-4700
flywichita.com

WICHITA SCREEN PRINTING

1433 W. Douglas Ave.
316-390-9725
wichitascreenprinting.com

WICHITA-SEDGWICK CO. HISTORICAL MUSEUM

204 S. Main St.
316-265-9314
wichitahistory.org

THE WORKROOM

523 E. Douglas Ave.
316-295-4520
theworkroomict.com



NIFTY NUT HOUSE



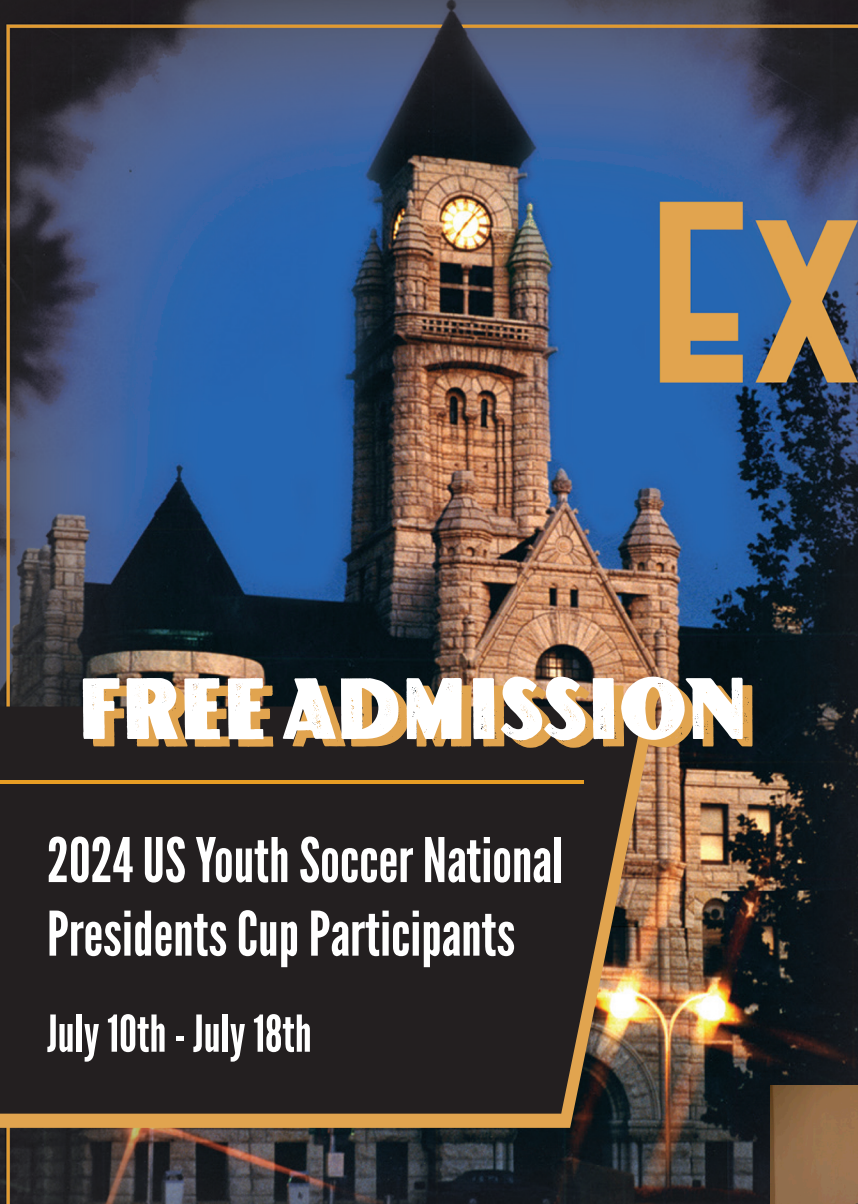
WICHITA ART MUSEUM



SWEET N SAUCY



515 S. Main St., Ste. 115 • Wichita, KS 67202
VisitWichita.com • 316-265-2800



EXPLORE LOCAL HISTORY

FREE ADMISSION

2024 US Youth Soccer National
Presidents Cup Participants

July 10th - July 18th



SHOP

for unique art, gifts
and books reflecting
our spirit, heritage
and culture



The Wichita-Segwick County Historical Museum



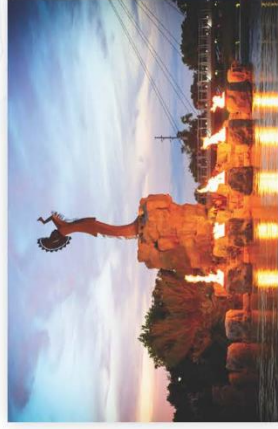
204 S. Main St. | WichitaHistory.org | 316-265-9314

Open: Tues. – Fri. 11 a.m. to 4 p.m., Sat. & Sun. 1 p.m. to 5 p.m. | Closed Mondays



SELF-GUIDED

walkingTOUR



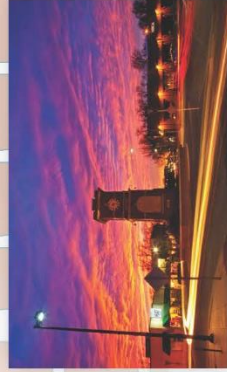
1. KEEPER OF THE PLAINS/ MID-AMERICA ALL-INDIAN CENTER

- 44-foot tall steel sculpture at the Big and Little Arkansas rivers
- Museum educates and preserves art and culture of American Indians
- 10,000 American Indians from 73 tribes in the Wichita area

SCAN
to find mini
Keepers on
Parade statues
around town

2. HISTORIC DELANO DISTRICT

- Established during the days of the Chisholm Trail cattle drives
- Now a thriving shopping district with more than 250 businesses, including eateries, shops and more



3. DELANO CLOCK TOWER:

- Just west of the Arkansas River in the Delano District

5. CHISHOLM TRAIL

- From 1867-1887, millions of longhorn steer were moved up the Chisholm Trail
- As railways expanded, Wichita became an important cattle-shipping center
- A stone marker sits at the corner of Douglas & McLean on the west bank of the Arkansas River



6. DOWNTOWN AND BRONZE SCULPTURES

- In downtown Wichita, there are 31 bronze sculptures, which have been placed along the sidewalks and urban parks
- A girl playing hopsotch, a street musician and many small children at play are bronzed along the street



8. NAFTZGER PARK

- Offers exciting outdoor opportunities like concerts, movies, pre-arena events and activities for both people and pets

4. RIVERFRONT STADIUM

- Located on the west bank of the Arkansas River in downtown Wichita
- You'll find public artworks by 12 local and regional artists in and around Riverfront Stadium. Walk around the exterior to see the art installed at each entrance



7. WICHITA-SEDCWICK CO. HISTORICAL MUSEUM

- Housed in the original 1892 City Hall building
- Exhibits feature a Wichita-built 1916 Jones Six automobile, Victorian home, 20th drug store, and the building's original 1890's Mayor's Office



7. WICHITA-SEDCWICK CO. HISTORICAL MUSEUM

- Established during the days of the Chisholm Trail cattle drives
- Now a thriving shopping district with more than 250 businesses, including eateries, shops and more

SELF-GUIDED WALKING TOUR CONTINUED...



10. GALLERY ALLEY

- Downtown Wichita partnered with Envision to transform Gallery Alley into a permanent destination for inter-sensory art experiences



12. OLD TOWN

- Nestled in the heart of Wichita, just east of downtown
- Brick-lined streets, historic lampposts and converted brick warehouses dating back to the late 1800s
- Old Town has become a destination sought out for its dining experiences, eclectic shops, vibrant nightlife, unique attractions and more
- Just north of Museum of World Treasures is a display detailing the history of the area

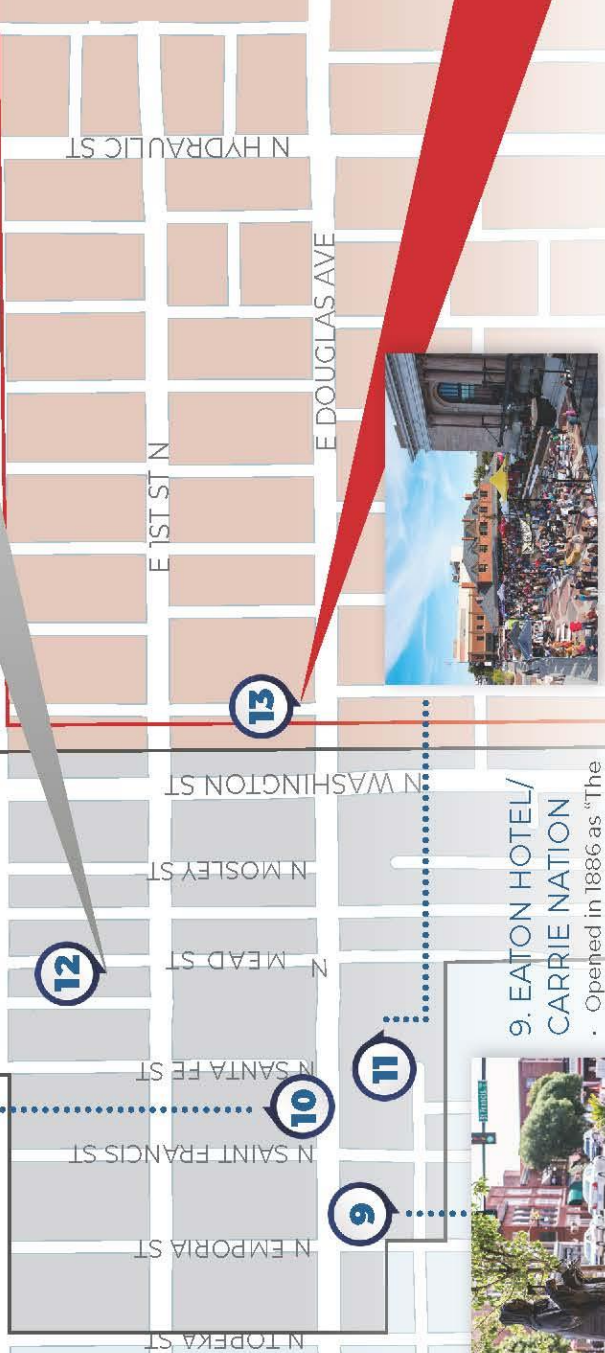
12

13

11

9

10



9. EATON HOTEL/ CARRIE NATION

- Opened in 1886 as "The Carey Palace Hotel, John Eaton bought it and allowed a bar to operate in spite of state prohibition
- Activist Carrie Nation attacked the saloon in December 1900



A Carrie Nation bronze sculpture can be found in front of the Eaton Hotel, which is now condos and a retail store, The Workroom

11. UNION STATION

- One of Wichita's most iconic downtown buildings, Union Station, has been repovated the former train station, Rock Island depot and baggage facility, and now houses a mix of retail and office space



N HYDRAULIC ST

E DOUGLAS AVE

13. DOUGLAS DESIGN DISTRICT

- Just east of Old Town along Douglas Avenue, starting at Washington Avenue
- Chock-full of eateries and breweries, and is known for the 70+ murals painted on buildings and structures throughout the district – many of which are created during Avenue Art Days
- Diverse community that includes College Hill, which is home to the **Frank Lloyd Wright Allen House Museum and Study Center**
- Also in the area is **Clifton Square**, a collection of unique Victorian-era houses transformed into a shopping and dining village

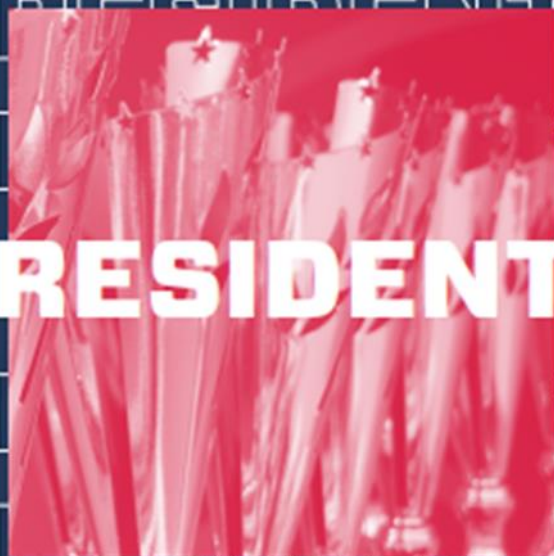




JULY 12-16



PRESIDENTS
PRESIDENTS
PRESIDENTS
PRESIDENTS
PRESIDENTS



#CLAIMTHECUP

